

heritagewalksandtalks

Auckland Domain

Come and explore the geological, Maori and European histories of New Zealand's oldest park, located on one of Auckland's first volcanoes. 1.5 to 2 hours.



Saturday **21 Jan** 10.30am
Saturday **17 March** 10.30am
Meet at base of front steps,
Auckland War Memorial Museum

Auckland Domain – Architecture

Learn about the architectural history and view the range of statues of buildings in this glorious public park. 1.5 to 2 hours.

Saturday **18 Feb** 2pm
Saturday **10 March** 2pm
Meet at base of front steps,
Auckland War Memorial Museum

A Dozen (and more) Delights

Delight in our history. Parnell, fringed by the waterfront and the Domain, is Auckland's oldest suburb, vibrant with history and elegance. Fascinating range of historic buildings: Victorian, Gothic, colonial, classical and Arts and Crafts. 2 hours.

Saturday **25 Feb** 10am
Saturday **17 March** 2pm
Meet at the Jubilee Building,
545 Parnell Road, Parnell

Grafton

Identify some of the early houses of the area and structures such as the Grafton Bridge and cemetery. Gives background on heritage buildings, both residential and public. 2 hours.



Sunday **11 March** 10am
Meet on the footpath outside
the Langham Hotel,
83 Symonds Street

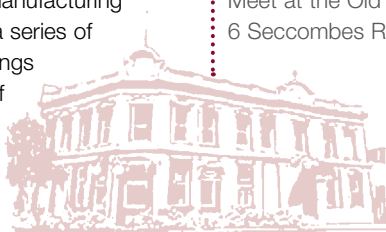
Judges Bay

Geological aspects of Maori and European history, the early Maori settlement, Maori hospital and the site where Bishop Selwyn landed in New Zealand. 70-80 minutes over easy terrain.

Sunday **29 Jan** 9am
Sunday **1 April** 9am
Meet at the car park on
Judges Bay Road, by the beach

Newmarket

Once sale yards for livestock and a major manufacturing and warehousing centre, it has undergone a series of transformations. Examples of heritage buildings between the 1850s and the 1960s. Learn of future planned development. 1.5 hours.



Sunday **26 Feb** 9am
Meet at the Old School Building,
6 Seccombes Road, Newmarket

**Parnell Trust Heritage Walk Season runs between September and April.
If you are interested in becoming a walk leader please contact us.**

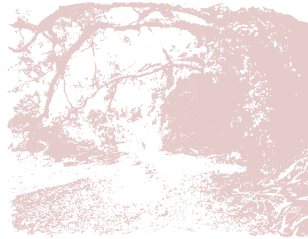


St Stephen's Chapel

View a striking example of timbered colonial architecture built in 1856 and "meet" some of its silent churchyard congregation. Includes many prominent Auckland colonists and early missionary families. 1.5 hours.

Streams and Gullies

Brisk walk through the bush-clad gullies of Parnell. The trail links five separate reserves, including the foreshore of Hobson Bay. Requires an above-average to good level of fitness. Not suitable for prams and buggies. 1.5 hours.



In the Zone

Discover a hidden corner of Auckland nestled between Mt Eden and Newmarket. View iconic buildings such as Auckland Grammar and walk through the leafy streets to reveal gracious homes. Glimpses of the area's volcanic past. 1.5 hours.

Campus Stories

From its earliest days in the 1840s to its modern architectural and cultural developments, the area in and around the University of Auckland campus provides a wealth of history and interesting stories. Good level of fitness required. Refreshments in Old Government House available. 1.5 hours.



Check our website for updates www.parnell.org.nz

Sunday **12 Feb** 2pm

Sunday **11 March** 2pm

Meet at St Stephen's Chapel, Judge Street, Parnell

Saturday **31 March** 10am

Meet at the Jubilee Building, 545 Parnell Road, Parnell



Saturday **18 Feb** 10am

Sunday **18 March** 10am

Meet at the corner of Seccombes and Mountain Roads

Friday **17 Feb** 10am

Saturday **24 March** 10am

Meet at Clock Tower Building, 26 Princes St, CBD



Bookings essential. Visit the Parnell Trust website www.parnell.org.nz, t 09 555 5164 community@parnell.org.nz. Adults \$5, children free.

heritagewalksandtalks

Tangirapaki – Hillside of Weeping Waters **NEW**

Take a unique Parnell walk, down a hill side to Hobson Bay to see sights including historic Kinder House and Ewelme Cottage. Enjoy interesting vintage houses from the 1880s to the 1940s as well as a pre European village site, park land and native bush. 1.5 hours.



Saturday **3 March** 2pm
Meet at the Jubilee Building,
545 Parnell Rd, Parnell

Parnell's Hidden Treasures

Stroll down streets steeped in the history of Auckland. Feel the ambience and excitement that must have been experienced by those brave immigrants who came to the shores and embraced life in a new country. Good level of fitness required. 2 hours.

Sunday **4 March** 10am
Meet at the Jubilee Building,
545 Parnell Rd, Parnell

Riverhead Heritage Fruit tour **NEW**

Walk around three acres of flowering heritage fruit trees – 200 plum, 150 apple and 50 pear trees. Murray Joyce and Rob Velseboer of Heirloom Organix have been nurturing these trees for 15 years and grow organic culinary herbs and heirloom vegetable seedlings. 1.5 hours.



Saturday **18 Feb** 2pm
Phone for location

Check our website for updates www.parnell.org.nz

**Parnell Trust Heritage Walk Season runs between September and April.
If you are interested in becoming a walk leader please contact us.**

Parnell Community Centre is always open to receiving suggestions for new courses or activities to include as part of our Learning and Leisure Programme.

If you have got a suggestion that you would like to talk to us about, or you would like to offer your services as a tutor, contact Parnell Community Centre reception on community@parnell.org.nz or **555 5164**.

We welcome
**course
and tutor
suggestions**